

# Company Profile

# ORS TRIMS LTD.

*Organized Reliable Service*

## Factory Office :

 South Banasree, Block: L, Road No. 14,  
House: 13, Ramapura, Dhaka-1219  
 01928 353 303  
01920 789548  
 Email: [info@orstrims.com](mailto:info@orstrims.com)  
[orstrims@gmail.com](mailto:orstrims@gmail.com)

## Head Office

137/B (3rd Floor), Arambagh,  
Motijheel C/A, Dhaka-1000  
01928 353 303  
01920 789548  
Email: [info@orstrims.com](mailto:info@orstrims.com)  
[orstrims@gmail.com](mailto:orstrims@gmail.com)



Website : [www.orstrims.com](http://www.orstrims.com)

# WHO ARE WE

## ABOUT ORS TRIMS LTD.

This is a 100% export oriented garments accessories manufacturing company. At present, We have started production with all kind of heat transfer sticker. ORS Trims Ltd.

## Corporate office

South Banasree, Block: L, Road No. 14,  
House: 13, Ramapura, Dhaka-1219

## CONTACT NO

Mr. Mahabub Alam  
Cell: 01928 353303

Md. Rashed Sheikh  
Cell: 01920 789548

Email: [info@orstrims.com](mailto:info@orstrims.com)  
[orstrims@gmail.com](mailto:orstrims@gmail.com)

Website: [www.orstrims.com](http://www.orstrims.com)

**ORS TRIMS LTD.**  
Is the symbol of quality and pride....



# ORS Trims Slogan

## Perfect to Serve

### OUR MISSION

We will make major changes to the fashion industry to make a Global Brand from Bangladesh creating positive image by providing best quality products and best services to the world community. We have started from the ground to reach the Top.



### OUR VISION

Making a global brand

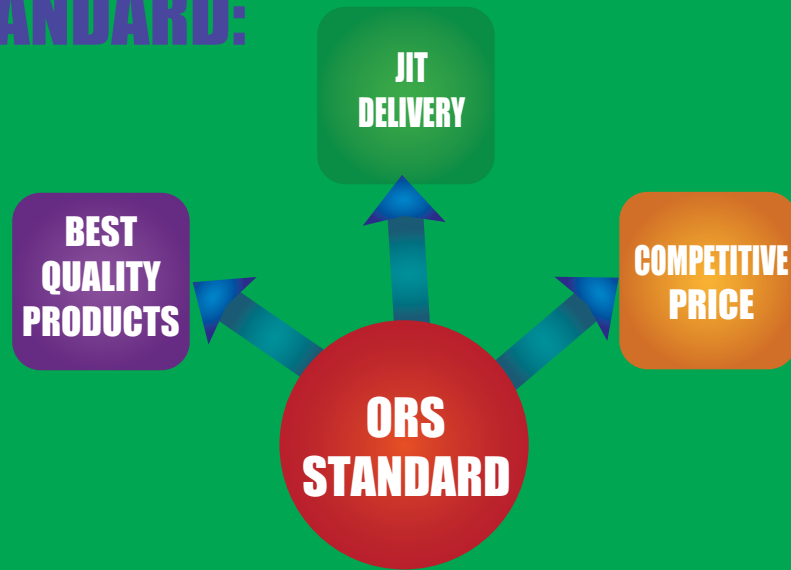


# MARKETING WE SERVE:



We provide best support to the 100% Export Oriented Ready Made garments industry. We provide the right thing at right time . We keep our eyes on the time of delivery to enhance buyer's confidence on our valued clients.

## ORS STANDARD:



## BEST QUALITY PRODUCTS

Ors Trims Ltd. is the symbol of Quality. All of our products are made by confirming to our strict quality standards. All services are performed following or exceeding all quality standards, To achieve the vest quality, we use

- ▶ Best quality raw materials imported from china, Taiwan & Korea.
- ▶ Modern Machineries having latest technological advancements.
- ▶ Properly trained, motivated and skilled manpower.
- ▶ Total quality management (TQM) system for inventory, production and supply.

[ Thus, we are perfect to serve you with the best quality product. ]



# CREATE A ROADMAP FOR MY BUSINESS SUCCESS:

Developing a business plan is critical for all businesses at any stage. It is an essential management tool; it identifies potential challenges and provides success strategies for growth. F. A business plan also helps to articulate vision and strategies to get the funding we need to start or expand small business.

Our business plan will grab hold of the company vision and plant the seed to grow a successful and profitable business. Even after the initial start-up phase, our business plan is updated and frequently used as a road map to guide through the future growth and expansion of business.

## OVERALL, OUR PROFESSIONAL BUSINESS PLAN WILL:

- ❑ Build upon marketing and sales initiatives to fuel the growth of the business.
- ❑ Make the SWOT analysis.
- ❑ Serve as a strategic planning tool that can be shared with investors, bankers, partners, and business development professionals in an effort to seek capital for business start-up or expansion.
- ❑ Our business plan services can save time and money.

## JUST-IN-TIME DELIVERY

We follow just-in-time (JIT) inventory delivery strategy so that our valued clients can reduce their burden of inventory managements. We can supply within very short period of time and thus our clients can manage the emergencies without taking any risk. We follow JIT supply n chain management system and use our own delivery vans. We are able to deliver goods to Dhaka and Chittagong city area at day-time by our special vans manufactured by following traffic rules. We are just-in-time. The world's worst traffic congestions in Dhaka city can't stop our JIT delivery! Thus, we are perfect to serve you with the best quality service!



# COMPETITIVED PRICE:



We offer the possible best price to our clients who are very much competitive in the market without compromising Quality of product and service.

We follow the following philosophy to reduce the cost of goods:

- ▲ Obtaining all legal benefits provided by Governments for the 100% export oriented industry.
- ▲ We maintain the strong just-in-time (JIT) supply chain system to reduce the higher inventory cost.
- ▲ We develop highly skilled workforce to get maximum productivity.
- ▲ We use the best quality machineries and raw materials, and uninterrupted power supply to reduce wastage.
- ▲ We use low cost credit facilities to reduce the high interest burden

We make profit by reducing cost of production, not from sales.  
Thus we are perfect to serve you with the best price

## Our Products



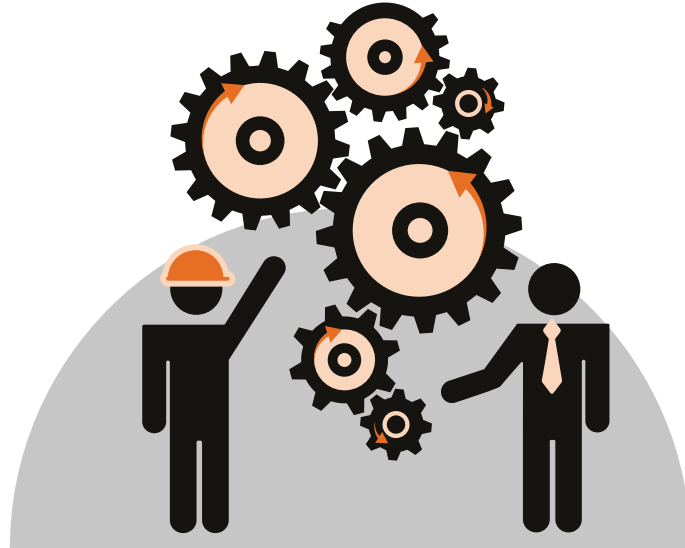
Heat Seal Label



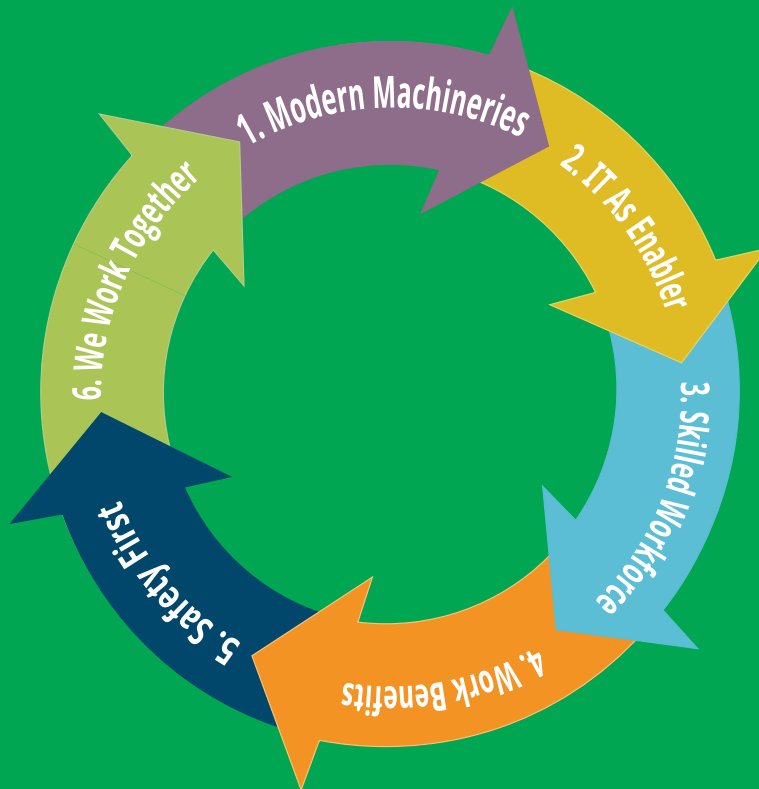
Transfer Photo Print



Reflective Transfer Sticker



# WAYS WE WORK



# SKILLED WORKFORCE



A skilled workforce is the key to growing a business in a saturated market . It gives leverage a business to win the race in a very competitive market like ours. A skilled workforce is among the most important attribute of a company. A skilled worker is worker who has special skill, training, knowledge, and acquired ability in their work. Skills development enhances both people's capacities to work and their opportunities at work, offering more scope for creativity and satisfaction at work. The future prosperity of any country depends ultimately on the number of persons in employment and how productive they are at work. European countries show that a 1percent increases in training days leads to 3 percent increase in productivity, and that the share of overall productivity growth attributable to training is around 16 percent.

Thus, we offer skill development training to our workforce. We try to recruit workers and executives having best educational qualification with strong common sense. We identify the people having inherent interest for a particular job and hard-working nature. Then we offer theoretical class-room knowledge based training to enhance their understanding about the job. Then we offer our workers on-the-job training. We correlate the performance of our employee to the incentive, both financial and promotion. So all our workforce is highly motivated and skilled that helps us to implement our ORS Trims Ltd. Standards.





## WORK BENEFITS

A skilled workforce is likely to get reasonable benefits for leading a happy life. Ors Trims Ltd. develops skilled workforce and maintain them for getting maximum benefits. We offer to our workforce:

- ▲ Honorable salary (which is much higher than the minimum salary threshold announced by Government).
- ▲ Maternity/Paternity leave.
- ▲ Skill development training.
- ▲ Routine Fire/safety Drill.
- ▲ Performance Incentive.
- ▲ System implementation incentive.
- ▲ Annual increment.

# COMPANY DETAILS

## ORS TRIMS LIMITED.

Company's formation	: ORS Trims Ltd.
Year of establishment	: Febuary, 2018
Chairman	: Md. Rashed Ali Sheikh
Managing Director	: Md. Sayed Ashraful Islam (Milon)
Director- Marketing & Oparetion	: Md. Mahabub Alam
Director- Finance & Production	: Ashok Kumar Saha
Operating Bank	: Uttara Bank Limited, Shantanagar Branch, Dhaka

## PLANT INFORMATION:

**ORS Trims Ltd. is a printing based factory located at South Banasree, Dhaka**

Taotal land area	: 6000 SQFT
Factory occaupied	: 5000 SQFT
Working Space	: 4500 SQFT

### PER DAY PRODUCTION CAPACITY:

A) Reflective print	: 100000pcs/Day
B) Transfer print	: 200000pcs/Day
C) Photo print	: 20000pcs/Day
D) Sublimation Print	: 20000pcs/Day
E) High density print	: 10000pcs/Day

# MODERN MACHIN PICTURE



VACOUME HEAT TRANSFER PRINTING MACHINE



AUTO HEAT TRANSFER PRINTING MACHINE & DRYER



# PRODUCTION PROCCESS PICTURE



# MODERN MACHIN PICTURE



Gross Power  
1400W

optional  
laser tube  
80w-2

**SPECIALIZED LASER CUTTING MACHINE**



**PLOTTER CUTTING MACHINE**



# MACHINERY DETAILS

SL NO.	MACHINE TYPE	QUANTITY
1.	Semi automatic machine	05
2.	Offset printing machine	02
3.	Laser cutting machine	02
4.	Sublimation printing machine	02
5.	Curing machine ( 22*4)	01
6.	Heat press machine	05
7.	Ploter Cutting Machine (Ploter)	02
8.	Manual printing vacuum	04
9.	Exposure machine	01
10.	Dry rack	05
11.	Teneth Ploter Cutting	02

# THE WORKFORCE:

NUMBER OF STAFF	
Staff	22 person
Production workers	60 person
Working time duration	8hr

# POWER UTILITY BACKUP:

Diesel generator/Made in China  
Capacity : 50KVA

# Buyer's Dealing

SL NO.	NAME	SL NO.	NAME
1.	C&A	05.	Aldi
2.	G-star	06.	Inter sports
3.	Tesco	07.	Fila
4.	Lidle	08.	K-rart
09.	Josfresh		



## WE WORK TOGETHER

We don't believe relationship only between Buyer & us. We extend this relationship toward our workforce and our suppliers. The Ors Trims Ltd. relationship model includes major four stakeholders:

- ◆ The Buyers (our valued client);
- ◆ The Skilled Workforce(our real capital);
- ◆ The Supplier (who make our dream reality) and lastly we.

We believe in partnering among all four parties. Partnership among us can build a good relationship and finally can meet needs of all parties.

# ORS TRIMS LTD.

*A House of garments accessories solution*



## **Factory Office :**

 South Banasree, Block: L, Road No. 14,  
House: 13, Ramapura, Dhaka-1219  
 01928 353 303  
01920 789548  
 Email: [info@orstrims.com](mailto:info@orstrims.com)  
[orstrims@gmail.com](mailto:orstrims@gmail.com)

## **Head Office**

137/B (3rd Floor), Arambagh,  
Motijheel C/A, Dhaka-1000  
01928 353 303  
01920 789548  
Email: [info@orstrims.com](mailto:info@orstrims.com)  
[orstrims@gmail.com](mailto:orstrims@gmail.com)

